

Your competent partner  
in oncology and hemostaseology.

Is the therapy effective?  
Is there a risk of developing recurrence?

These are the most important questions from patients.  
With maintrac, it is our aim to help answer these questions.

*All that is required is 15 mL of blood.*

Maintrac offers the following advantages:

- *Early detection of renewed tumor activity*
- *Monitoring of therapy*
- *Adjustment of therapy*
- *Long-term follow-up even after completion of therapy*

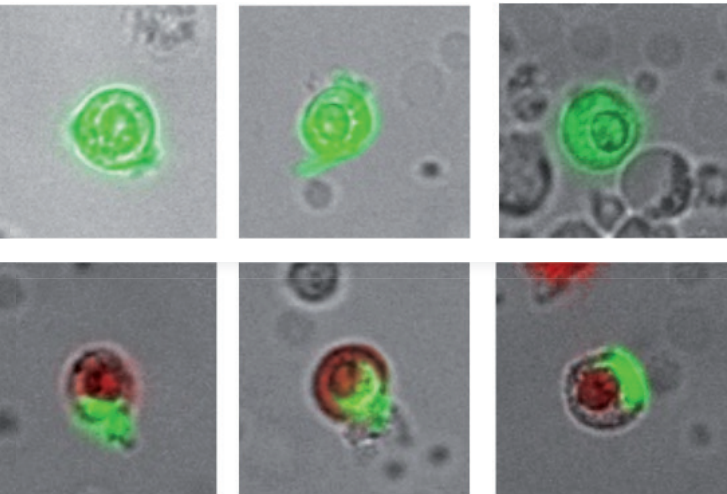
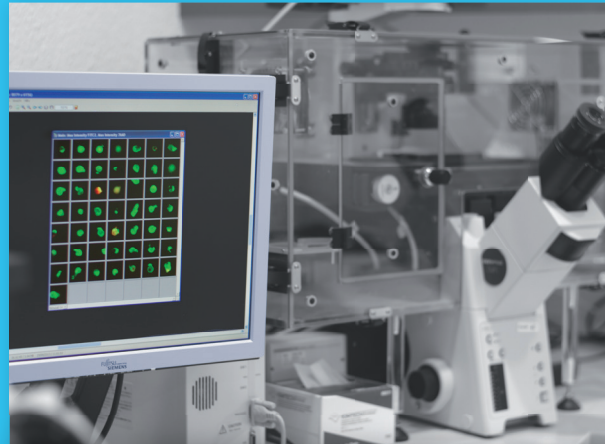


Image above:  
Vital tumor cells are stained green in the blood test.  
Dying tumor cells stained red in addition.



*Specialized Immunology  
Research and Development GmbH*

*In association with  
Transfusion Medicine Center  
Bayreuth (TZB)*

*Kurpromenade 2  
95448 Bayreuth, Germany  
Phone: +49 (0) 921 730052  
mail@simfo.com  
www.simfo.com*

*Specialized Medical Laboratory  
Dr. Pachmann*

*Kurpromenade 2  
95448 Bayreuth, Germany  
Phone: +49 (0) 921 850200*

*Since 2005, maintrac is performed by the DIN  
EN ISO 15189 accredited specialized medical  
laboratory Dr. Pachmann.*

**maintrac**



maintrac – the blood test  
for monitoring  
breast cancer therapy

161125-FLGY-EN-WM



## maintrac monitors the success of endocrine therapy.

maintrac can detect tumor activity by a blood test due to the increase in the number of tumor cells earlier as compared to other methods.

With maintrac, the treating physician has an additional tool for the regular monitoring of tumor activity (every 3–6 months).

*In the case of an increase in the number of cells, endocrine therapy can be modified (tamoxifen vs. aromatase inhibitor).*

## maintrac – the blood test for monitoring breast cancer maintenance therapy.

Every cancer is different and the efficacy of therapy varies with each treatment. Therefore, it is important to monitor the success of the therapy used.

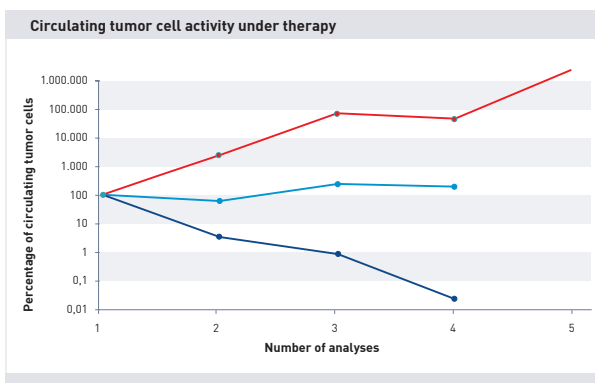
**Cancer releases tumor cells, or circulating tumor cells, into the blood.** Even years after surgery or therapy, tumor cells may still be present in blood.

**maintrac** is a highly sensitive diagnostic method based on circulating tumor cells. It directly allows for monitoring tumor activity.

**maintrac** provides information on the efficacy of the endocrine therapy used.

**maintrac** offers the possibility to obtain further clarity on the course of the disease.

Further information on maintrac can be found on [www.maintrac.com](http://www.maintrac.com)



During the course of therapy, cell counts are determined serially.

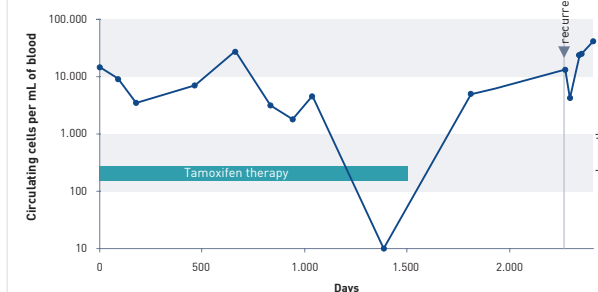
- Increase in cell numbers** = **optimization required**
- Constant cell numbers** = **positive course**
- Decrease in cell numbers** = **effective therapy**

Full details and further actions should be discussed with your treating physician.

## Is an extension of endocrine therapy useful?

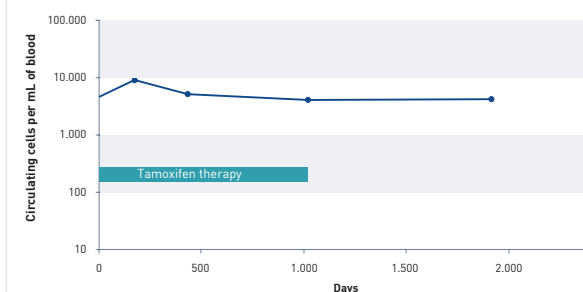
It does not always make sense to use long-term tamoxifen therapy for more than 5 years. The extent to which a patient can benefit from further treatment can be assessed using maintrac.

Breast cancer patient under long-term monitoring with maintrac: example 1



A re-increase in tumors cells after the end of therapy was succeeded by disease recurrence.

Breast cancer patient under long-term monitoring with maintrac: example 2



Minor changes or stable numbers indicates a disease free course for the patient.

After completion of therapy, an increase in the number of circulating tumor cells may indicate that it may be useful to consider resumption of therapy.